



Community Energy Efficiency Program

2023-2025 Biennial Report

to the Washington State Legislature



A family that benefited from the Energize Thurston County Campaign.
Photo courtesy of South Puget Sound Habitat for Humanity.



Delivering Energy Efficiency to Underserved Washingtonians

Working in partnership with Commerce and community partners, WSU has managed the Community Energy Efficiency Program (CEEP) since 2009. Over the 2023-2025 biennium, six dedicated community partners have upgraded homes and small businesses with high-efficiency equipment such as heat pumps, heat pump water heaters, induction ranges, and miscellaneous weatherization measures. They have also educated residents and business owners on proven conservation strategies. This work has lowered energy costs, reduced fossil fuel use, and strengthened local economies while advancing Washington's climate and equity goals.

2023-2025 Biennium CEEP Partners



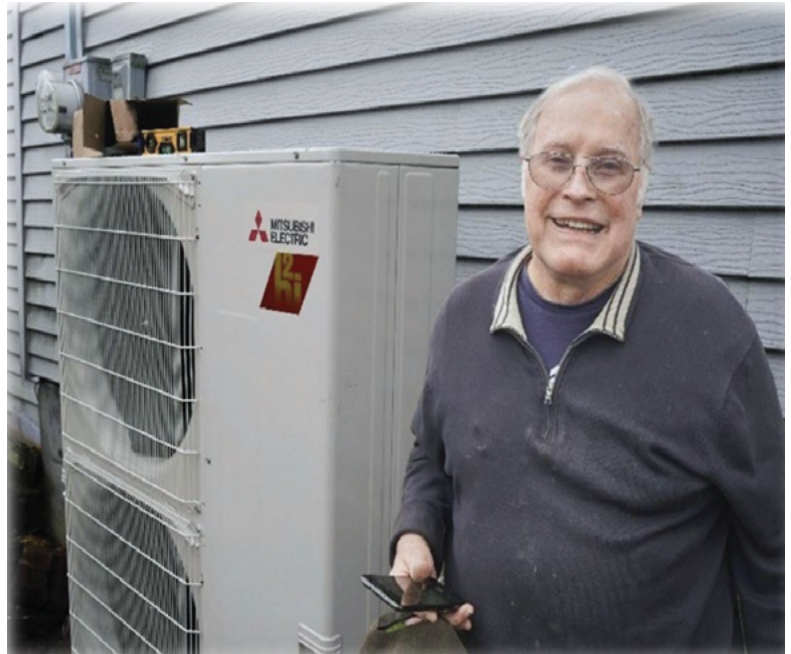
Linda Ervine of the Kicking Gas Campaign chatting with a recipient of CEEP funds. Photo courtesy of For the People.

CEEP projects are led by community-based or non-profit organizations with deep community roots. The projects are geographically dispersed across the state. Building relationships with their communities, fellow community organizations, and local installers has been vital to the success of each CEEP partner's program development.

- **The Opportunity Council:** With six different utility partners in their territories, the Opportunity Council serves Whatcom, Skagit, Island, and San Juan Counties. Their focus is on whole-home weatherization for low and moderate-income households, including single and multi-family housing. The Opportunity Council is successfully operating what they call a "one-stop shop" for customers, administering energy audits, contracting with local installers to complete upgrade measures, and providing quality assurance inspections after project completion.



- **Sustainable Living Center:** Serving Walla Walla, Franklin and Columbia Counties and working with five utilities in their territory, the Sustainable Living Center supports incentives for energy efficiency and weatherization work, prioritizing hard to reach individuals and families. With a focus on implementation of whole house weatherization measures the Sustainable Living Center performs residential assessments and audits. Collaborating with local contractors, they coordinate energy efficiency upgrades while ensuring customers are maximizing utility rebates and other incentives for cost savings.



The recipient of a new heat pump from the King County Energize Program. Photo courtesy of King County.

- **For the People:** Led by For the People, a coalition of local groups in the South Whidbey Island regions use CEEP funding for a decarbonization campaign called “Kicking Gas.” Their primary focus is on installation of ductless heat pumps to replace non-utility heat (propane, oil, or wood) on southern Whidbey Island. They also facilitate installation of some HP water heaters and induction stoves. The Kicking Gas program provides education, outreach, enrollment, sliding-scale subsidies, and financing to ensure the retrofits are affordable.
- **Elevate:** A place-based decarbonization program upgrading Pierce County’s unsubsidized, affordable rental housing. Upgrading this housing stock has been critical for preserving affordability, meeting the region’s housing needs, and minimizing displacement while supporting climate resiliency. Elevate is a new organization within the CEEP program and has been building relationships with building owners deemed eligible candidates. They have just completed HP and water heater installations in for several units in two multifamily buildings and have two more properties scheduled for this same work.



- **Electrify King County:** A collaborative partnership between King County and the cities of Bellevue, Issaquah, Kirkland, Mercer Island, and Redmond. This program installs high efficiency airsource heat pumps in King County as a primary decarbonization measure, with a focus on eastside cities and the Skyway and White Center unincorporated areas south of south Seattle. Installations focus on oil- and natural gas-heated homes, as well as inefficient electrically heated homes. Program focus includes low- and moderate-income households.
- **South Puget Sound Habitat for Humanity:** This program focuses on heat pump installations and necessary weatherization improvements in Thurston County. In partnership with the City of Olympia, their goal is to increase community awareness of the benefits of heat pump technology and increase local installations of air-source heat pumps. Following the model of successful solarization campaigns in Thurston County and other regions, this campaign employs a group-purchase model to achieve economies of scale and reduce upfront cost barriers for all program participants. Fully subsidized weatherization, electrical upgrades, and other critical repairs necessary for heat pump retrofits are integrated for all income-qualified participants.



Licensed Adobe Stock image.



Partner Driven Impact

The table below includes CEEP-funded or CEEP cost share measures completed by partner organizations, including heat pump, water heater, and induction stove installations, and wall, attic, and floor insulation improvements (in square feet). In addition to the installed measures captured in this table, the program completed home energy assessments for all homes who participated. Weatherization measures such as entry door replacement, window replacement, or duct sealing were also completed for many homes.

Partner	Heat Pump Installations	Heat Pump Water Heater Installations	Induction Stove Installations	Wall Insulation R13 (sq ft)	Attic Isulation R49 (sq ft)	Floor Insulation R30 (sq ft)
Habitat for Humanity	45					
Kicking Gas	100	3	22			
King County	140					
Sustainable Living Center	40	14		78,644	136,295	46,547
Opportunity Council	20	4		37,733	47,612	43,886
Total	340	19	22	116,377	183,907	90,433

Potential Savings

The table below shows typical yearly electricity savings for selected efficiency measures, including heat pump water heaters, heat pumps, and insulation upgrades.

Measure	Savings (kWh/year)
Heat Pump Water Heater	1,054
Heat Pump	6,182
Floor Insulation (per 1,000 sq ft, (R0 → R30))	420
Attic Insulation (per 1,000 sq ft, (R0 → R49))	1,300
Wall Insulation (per 1,000 sq ft, (R0 → R13))	760



Initiating Work for the 25-27 Biennium

To ensure a transparent and competitive process for allocating Community Energy Efficiency Program funding for the 2025–2027 biennium, we issued a Request for Proposals (RFP) to identify qualified partners. This allowed us to engage organizations with innovative, community-driven strategies that align with the CEEP goals of reducing energy use, improving equity in energy efficiency gains, and supporting local economic development. By opening the process to a broad pool of applicants, we maximized the impact of the state’s investment in energy efficiency. Based on the outcome of this process, we are proceeding towards contracting with seven community organizations, a mix of experienced and new partners.



Licensed Adobe Stock image.

Looking Ahead

The lessons learned during this biennium will inform future efforts and help scale our successes. By expanding collaboration with the Department of Commerce and leveraging other available rebates and incentive programs, we aim to deliver even greater benefits—especially to low- and moderate-income households statewide. Our ongoing work will build a cleaner, more equitable energy future for all Washingtonians.

For more information about CEEP, contact:

Erika Coveny
Program Manager
WSU Energy Program
(360) 956-2109
email: erika.coveny@wsu.edu
website: energy.wsu.edu/Buildingefficiency/CommunityEETProgram.aspx

WSU Energy Program

Our mission is to advance environmental and economic well-being by providing unmatched energy services, products, education and information based on world-class research. Our staff of energy engineers, energy specialists, technical experts and software developers work out of Olympia, Washington. The WSU Energy Program is a self-supported department within the WSU College of Agricultural, Human and Natural Resource Sciences.



WASHINGTON STATE UNIVERSITY
Energy Program

Non-Discrimination Statement

In matters of admissions, employment, housing or services, and/or in the educational program or activities it operates, WSU does not discriminate or permit discrimination by any member of its community against any individual on the basis of sex; sexual orientation; gender identity/expression; race; color; religion; age; creed; national or ethnic origin; marital status; genetic information; status as a protected veteran, an honorably discharged veteran, or member of the military; physical, mental, or sensory disability, including the use of a trained service animal; immigration or citizenship status, except as authorized by federal or state law, regulation, or government contract.